

Lentille gravitationnelle

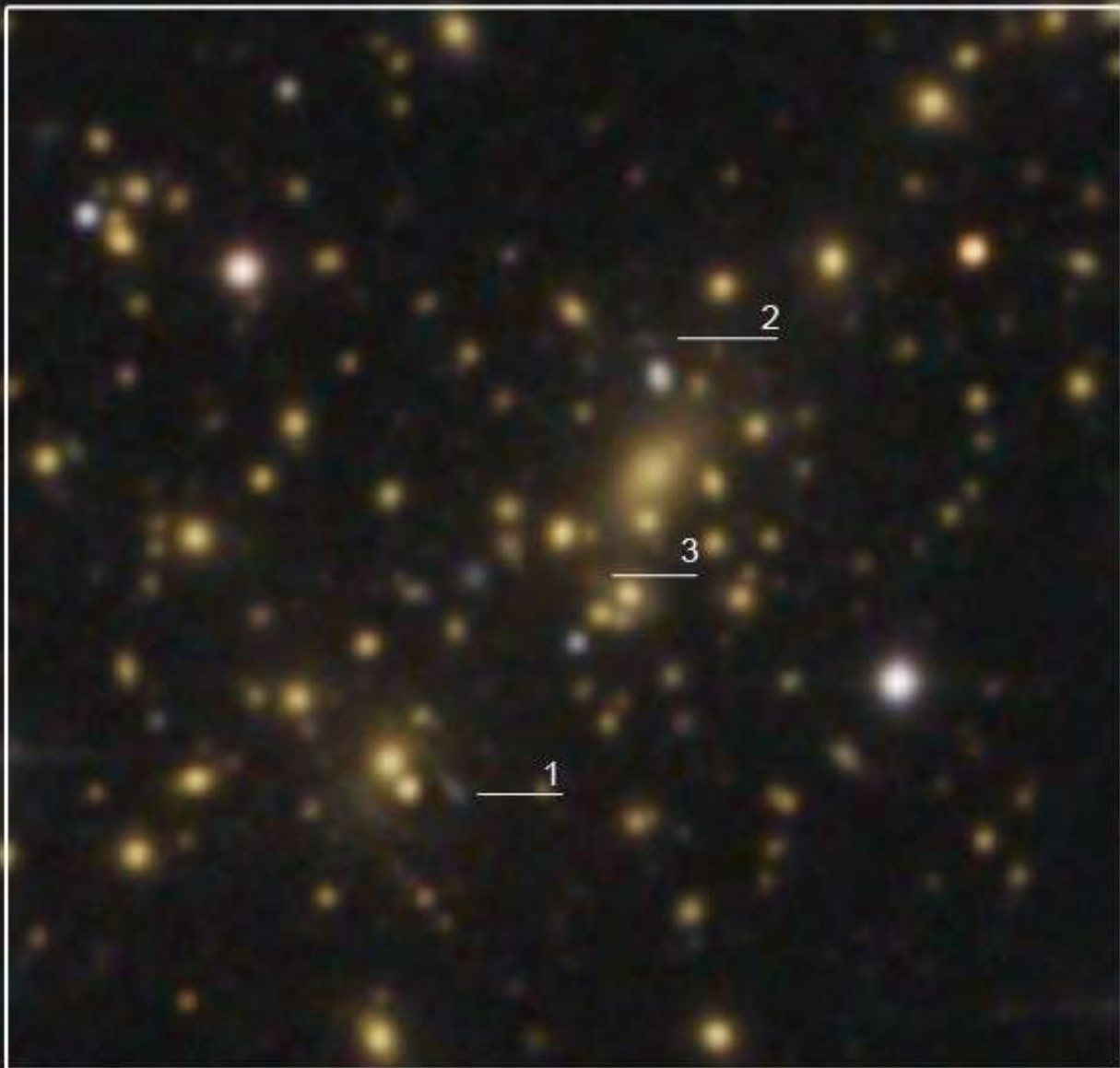
Relativité Générale

Crédits photo web, wikipedia, NASA, ESA, Atronoo

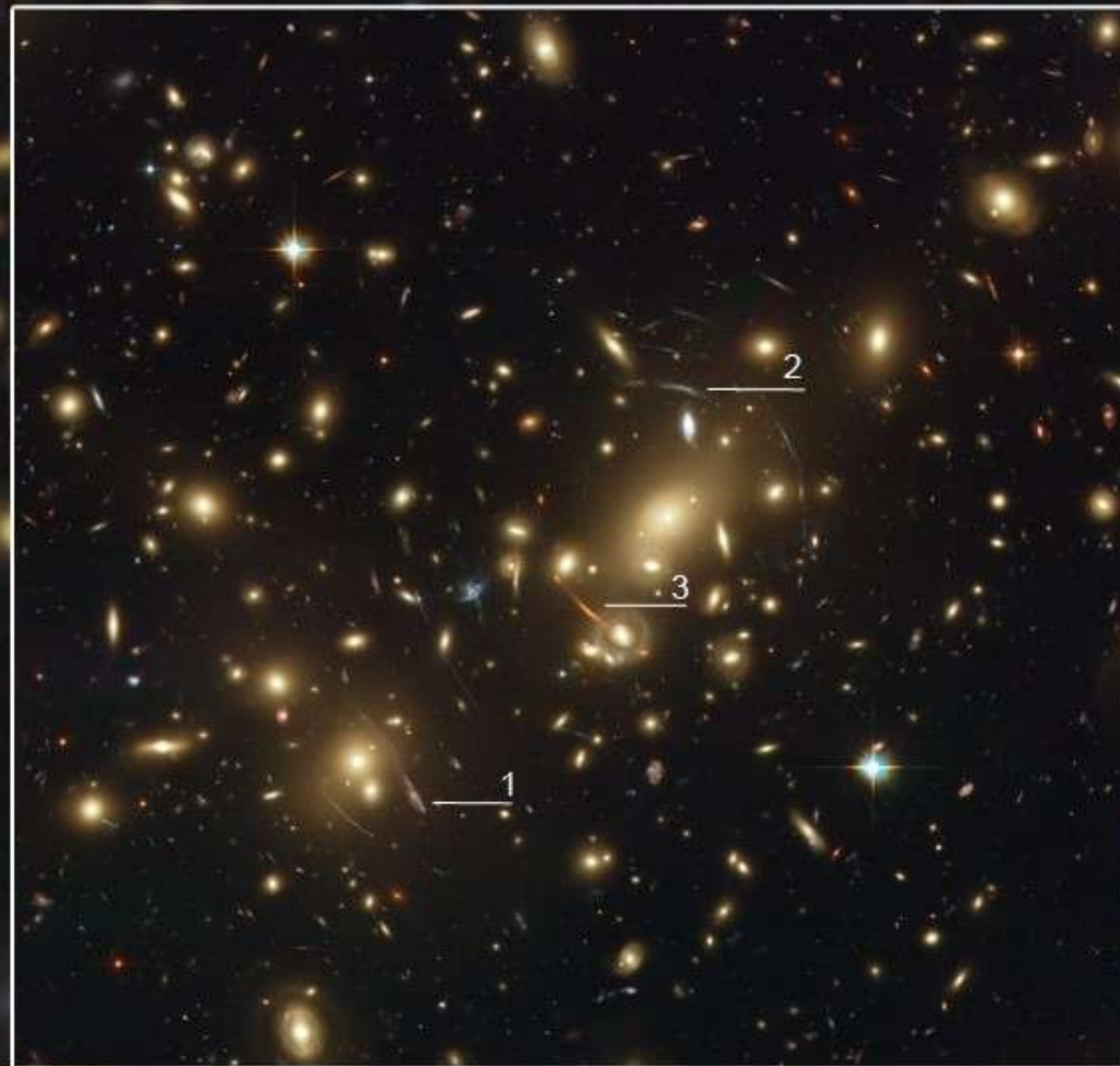








Hubl, 12" f=1120mm

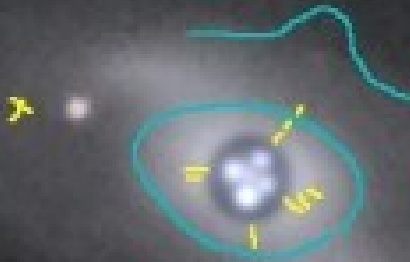


Hubble Space Telescope image

Credit: NASA, ESA, and Johan Richard (Caltech, USA)

E47/800

E8/635



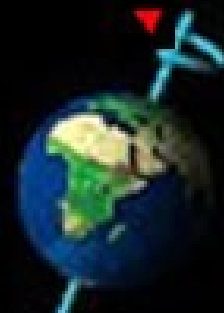
Inclinaison et sens de rotation des planètes



axial tilt 0.01°
Mercury



axial tilt 177.3°
Venus



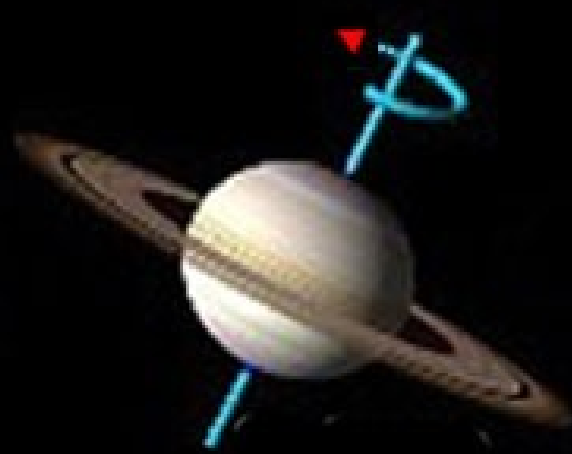
axial tilt 23.26°
Earth



axial tilt 25.19°
Mars



axial tilt 3.13°
Jupiter



axial tilt 26.73°
Saturn



axial tilt 97.77°
Uranus



axial tilt 28.32°
Neptune